

ALL-ALUMINUM

★ **FREEDOM XP**



WEIGHT CONSCIOUS | RELIABLE & DURABLE | HIGH PERFORMANCE



Great Dane

WEIGHT CONSCIOUS

Designed for strength and durability, the Freedom XP maximizes payload versatility while weighing-in as one of the industry's lightest all-aluminum flatbeds.

Customized with options, the XP weighs less than 9,000 lbs. saving nearly 1,200 lbs. when compared with a comparable combination steel/aluminum trailer, and is rated for a 52,000 lb. load concentrated in four feet, 60,000 lb. load available as an option.



RELIABLE & DURABLE



Innovative Floor Design

The aluminum floor is standard with a safety-grip surface for increased traction and load stability. Double floor fasteners are located in high stress areas for increased strength.



Premium Landing Gear

The GD65 landing gear's proven engineering technology coupled with quality and durability provides increased lifting capacity.



Outriggers

2" square heavy-duty outriggers transfer load weight from the side rails to the lower main beams and are securely attached with specially designed fasteners.



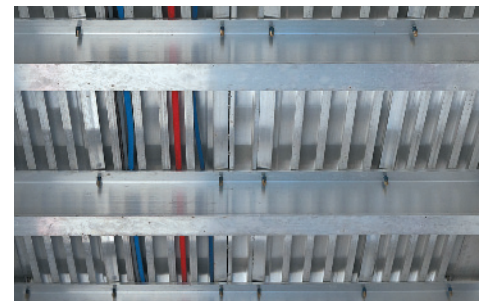
Fuel Efficient Tires

Bridgestone R196 radial delivers long, even wear and outstanding retreadability, in fast-wear, high scrub applications.



Premium Wheel End System

Stemco's Platinum Performance Plus Wheel End System features an exclusive 8-year limited warranty.



Crossmember Spacing

Four-inch deep aluminum crossmembers are standard on 16-inch centers front to rear. Twelve-inch crossmember spacing is optional for additional support. An optional coil package places extra crossmembers between the main-beams in the coil area to reduce floor damage and increase floor strength.



XP

Air-Ride Suspension

Standard Hendrickson INTRAAX air-ride suspension is not only lightweight but delivers reliable performance. Each suspension is hot dipped galvanized for added corrosion protection.



Mainbeam Design

To optimize overall performance, the XP's innovative design features a two-piece riveted main beam. The split beam is engineered for light weight, superior strength and streamlined design. It is contoured for optimal swing clearance.



Upper Coupler Construction

The upper coupler is constructed with additional rust-preventative coatings for a long-lasting, strong and durable connection. The .25" main-beam plate tapers up for easy pick up and dropping of a loaded trailer.



Siderails

For ultimate flexibility in load securement, the Freedom XP features heavy-duty extruded aluminum side rails with an integral winch slide track, aluminum pockets, large spools and full-length aluminum rub rail.



Front End Construction

Marker lights are protected in an aluminum diagonal front corner for added protection. Air and electrical connections are protected within the perimeter of the front five stake pockets.



LED Light Package

Grote's MicroNova DOT lamps and dual-intensity ID lights improve visibility and extend service life. This all-LED system comes standard with the fully modular, maintenance-free, industry-best Long Life Light System featuring a streamlined, snag-free wiring harness—all backed by a 10-year warranty. This sealed harness prevents moisture intrusion, allows for custom wiring, and is extremely durable.



Rear Construction

features a bolted rear impact guard that meets all federally-mandated strength requirements for the U.S., Canada and Latin America. The bolted-design makes repairs or replacements effortless.



Available with Appearance Package

www.greatdanetrailers.com/freedom-xp

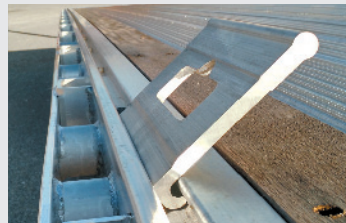
Geometric Dimensions (Standard Configuration)

- Length: Available in 48' and 53'
- Tandem Axle Fixed Air Ride Suspension 121" Axle Centers
- Extruded Aluminum Beams
- 102" Overall Width
- 48" Upper Coupler Height
- 30" King Pin Location
- Landing Gear 112" from King Pin



POPULAR OPTIONS

- Disc Brakes
- Options for Canada
- 60,000 lb. concentrated load in four feet



Sliding Removable Chain Hooks



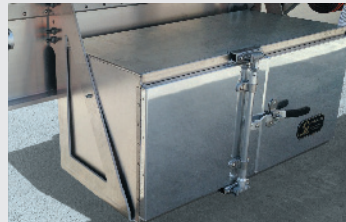
Sliding Chain Hook Storage Box



Integral Winch Track



Dunnage Rack



Tool Box



Sliding Rear Axle



Support — Where you need it, When you need it.

Great Dane's AdvantEDGE Program connects you to a nationwide network of service locations to make your operations more reliable and easier to manage. Get peace of mind with 24-hour emergency road service, parts price protection, controlled ordering and invoicing, and much more. **Enroll free online or at any participating Great Dane branch or full-service dealer. Learn more at www.greatdanetrailers.com/advantedge**



Great Dane

www.greatdanetrailers.com/freedom-xp